

Starting in nursery



Welcome to the Annunciation Catholic
Infant School

Play-Explore-Motivate





*Your child's Class
Teacher:
Miss Lynch*

Key Worker system: Miss Lynch or another member of the nursery team will be allocated to be your child's **key worker**. This means they will help with their settling, bond with them, work with them in their next steps and record their progress.



Mrs. Minihan, Executive Headteacher/
Designated Safeguarding Lead



Miss Bourke, Deputy Headteacher/ Infant
SENCo/ Deputy Safeguarding Lead



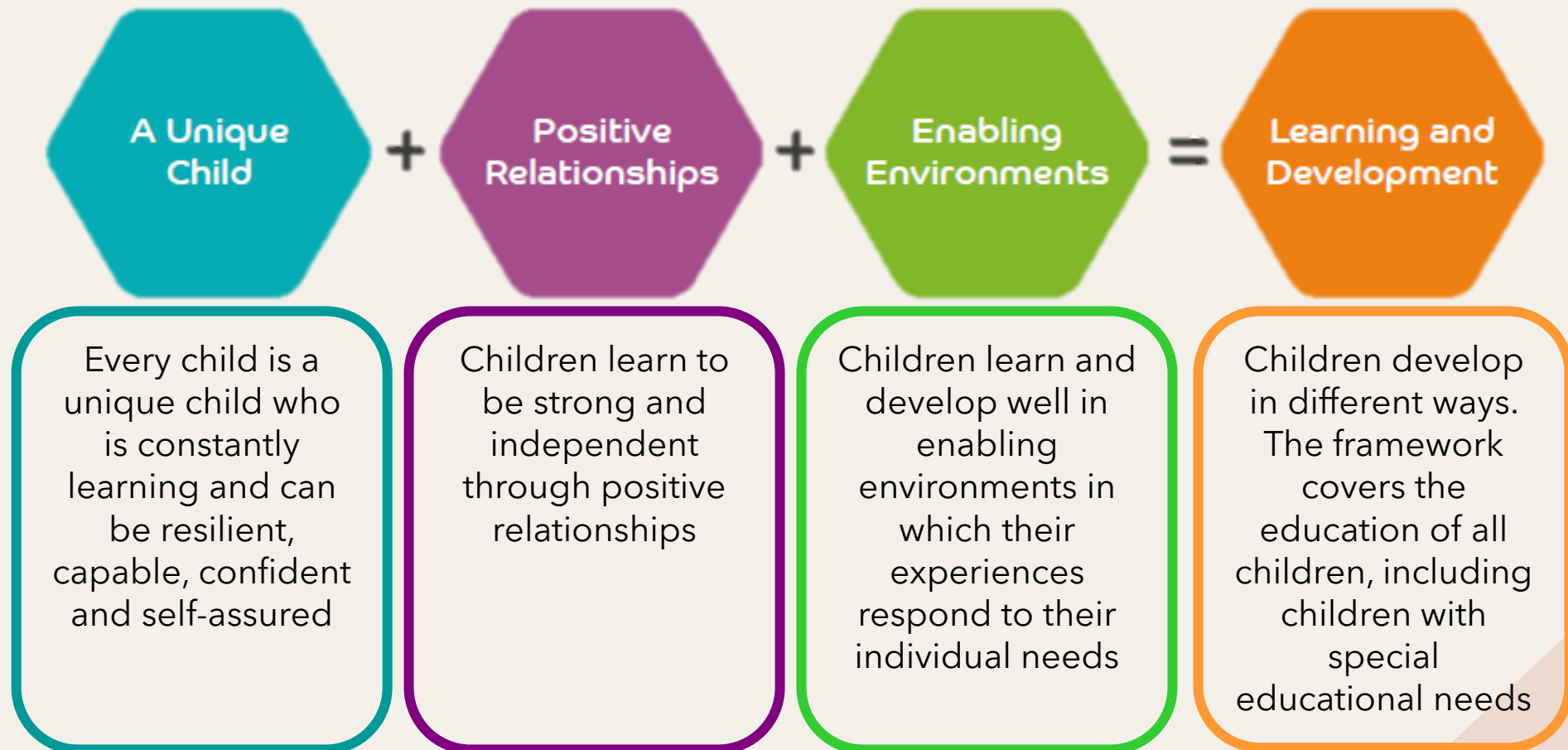
Our Vision

- The best possible start in life
- High quality Early Years education
- Secure and caring environment
- Happy, safe, curious, confident and independent

‘Be who God meant you to be and you will set the world on fire’



EYFS (Early Years Foundation Stage) Statutory Framework



The seven Areas of Development: ***PRIME AREAS***



Communication and
Language



Personal, Social and
Emotional Development



Physical Development

Communication and Language

- Lots of communication opportunities
- Correct modelling of conversation
- Gradually building attention



Personal, Social and Emotional Development

- Establishing positive relationships and gentle interactions
- Gradually understanding and following rules
- Being aware of their own emotions
- Knowing how to stay healthy and clean, and how to take care of themselves



Physical Development

- Gross motor skills provide the foundation for developing healthy bodies and social and emotional well-being
- Core strength and coordination
- Fine motor control and precision helps with hand-eye co-ordination which is later linked to early literacy.



The seven Areas of Development: SPECIFIC AREAS

Literacy

Mathematics

Understanding
the World

Expressive Arts
and Design





Learning through play

Igniting their curiosity

Living new experiences

<https://primarysite-prod-sorted.s3.amazonaws.com/the-federation-of-the-annunciation-catholic-schools/UploadedDocument/ca130053-facd-4fbf-a366-b40bf58308ba/what-to-expect-in-the-eyfs.pdf>

SEND

If your child has a diagnosis, any Special Educational Need, or if you are worried about your child's development, please talk to us as soon as possible.

That way, you can have a conversation with Miss Bourke (SENDCo), the specialists involved and your Class Teacher to put in place the right support for your child.



Nursery session times

Full time children (30h funding): 8:45-15:15 (Doors open at 14:55)

Morning session (15h funding): 8:45-11:45

Afternoon session (15h funding): 12:15-15:15 (Doors open at 14:55)

Please make sure you report any absences.

Punctuality is essential.



Settling

Home visits (WB 4th of September)

Staggered start

Slow settling

Bonding with your Key Worker



The correct uniform:

What you can buy from the school office



- Joggers
- Jumper
- Book Bag
- Sun hat



The correct uniform:

What you can buy from the shop

- White polo shirt
- Grey (boys) and navy (girls) socks
- Black school shoes
- Navy blue coat
- Navy blue hair accessories



The correct uniform

- No hair beads or colourful hair accessories
- No trainers
- No denim jackets or coats with patterns and colours



Food in the nursery

All children will have access to fruit, milk, and water for snack in the mornings and afternoons. Please do not bring food or drinks unless your child stays for lunch.



PTA

We have an active PTA which organises fantastic activities during the year such as our famous Christmas and Summer Fayres.

They raised money that has helped the school buy a whole new set of IT equipment, and they are currently raising money to improve our school library.

You are already a member of the PTA by being a parent of the school. Please considering volunteering some of your time if you have exciting new ideas to help us develop it further.



Governor's fund

The governor's fund helps us maintain the school.
You will receive a letter from the governors to ask you for a contribution through ParentPay.

Single child: £60/year

Family of more than one child: £80/year

Getting ready to start nursery

Practising being independent to go to the toilet

Reading books together

Talking a lot

Spending time outside and moving

Encouraging your child to be independent and curious

Parent engagement

- Twitter
- Tapestry
- Website
- Newsletters
- Class Dojo
- Stay and Play
- Workshops



ClassDojo

